

# Places for Everyone



# Places for Everyone



# Context

- 5 March 2024 Tameside Council resolved to adopt Places for Everyone.
- Resolution is with effect from 21 March 2024 when it will become part of Tameside's Development Plan
- The culmination of a decade of work, the single largest joint plan prepared nationally
- 5 boroughs have now adopted (Salford, Wigan, Tameside, Bolton & Oldham)



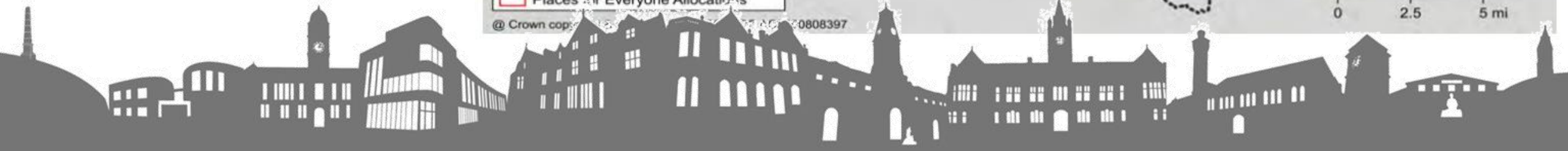
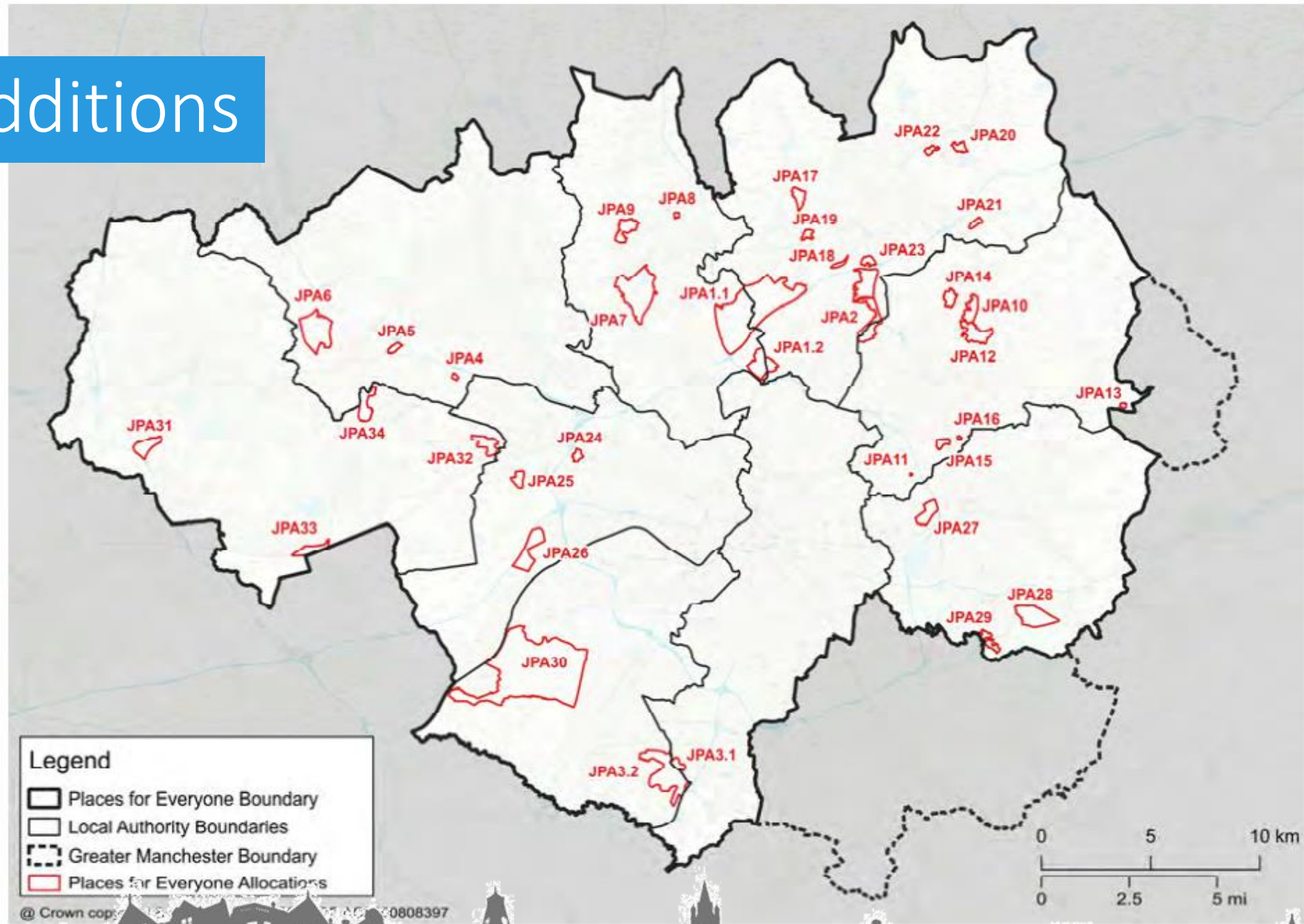
# Policy Overview

PfE Policy	Policy Name	Chapter
JP-Strat 1	Core Growth Area	Strategy
JP-Strat 2	City Centre	Strategy
JP-Strat 3	The Quays	Strategy
JP-Strat 4	Port Salford	Strategy
JP-Strat 5	Inner Areas	Strategy
JP-Strat 6	Northern Areas	Strategy
JP-Strat 7	North-East Growth Corridor	Strategy
JP-Strat 8	Wigan-Bolton Growth Corridor	Strategy
JP-Strat 9	Southern Areas	Strategy
JP-Strat 10	Manchester Airport	Strategy
JP-Strat 11	New Carrington	Strategy
JP-Strat 12	Main Town Centres	Strategy
JP-Strat 13	Strategic Green Infrastructure	Strategy
JP-Strat 14	A Sustainable and Integrated Transport Network	Strategy
JP-S 1	Sustainable Development	Sustainable and Resilient Places
JP-S 2	Carbon and Energy	Sustainable and Resilient Places
JP-S 3	Heat and Energy Networks	Sustainable and Resilient Places
JP-S 4	Resilience	Sustainable and Resilient Places
JP-S 5	Flood Risk and the Water Environment	Sustainable and Resilient Places
JP-S 6	Clean Air	Sustainable and Resilient Places
JP-S 7	Resource Efficiency	Sustainable and Resilient Places
JP-J 1	Supporting Long-Term Economic Growth	Places for Jobs
JP-J 2	Employment Sites and Premises	Places for Jobs
JP-J 3	Office Development	Places for Jobs
JP-J 4	Industry and Warehousing Development	Places for Jobs
JP-H 1	Scale of New Housing Development	Places for Homes
JP-H 2	Affordability of New Housing	Places for Homes
JP-H 3	Type, Size and Design of New Housing	Places for Homes

PfE Policy	Policy Name	Chapter
JP-H 4	Density of New Housing	Places for Homes
JP-G 1	Landscape Character	Greener Places
JP-G 2	Green Infrastructure Network	Greener Places
JP-G 3	River Valleys and Waterways	Greener Places
JP-G 4	Lowland Wetlands and Mosslands	Greener Places
JP-G 5	Uplands	Greener Places
JP-G 6	Urban Green Space	Greener Places
JP-G 7	Trees and Woodland	Greener Places
JP-G 8	Standards for Greener Places	Greener Places
JP-G 9	A Net Enhancement of Biodiversity and Geodiversity	Greener Places
JP-G 10	The Green Belt	Greener Places
JP-G 11	Safeguarded Land	Greener Places
JP-P 1	Sustainable Places	Places for People
JP-P 2	Heritage	Places for People
JP-P 3	Cultural Facilities	Places for People
JP-P 4	New Retail and Leisure Uses in Town Centres	Places for People
JP-P 5	Education, Skills and Knowledge	Places for People
JP-P 6	Health	Places for People
JP-P 7	Sport and Recreation	Places for People
JP-C 1	Our Integrated Network	Connected Places
JP-C 2	Digital Connectivity	Connected Places
JP-C 3	Our Public Transport	Connected Places
JP-C 4	Streets For All	Connected Places
JP-C 5	Walking and Cycling	Connected Places
JP-C 6	Freight and Logistics	Connected Places
JP-C 7	Transport Requirements of New Development	Connected Places
JP-D 1	Infrastructure Implementation	Delivering the Plan
JP-D 2	Developer Contributions	Delivering the Plan

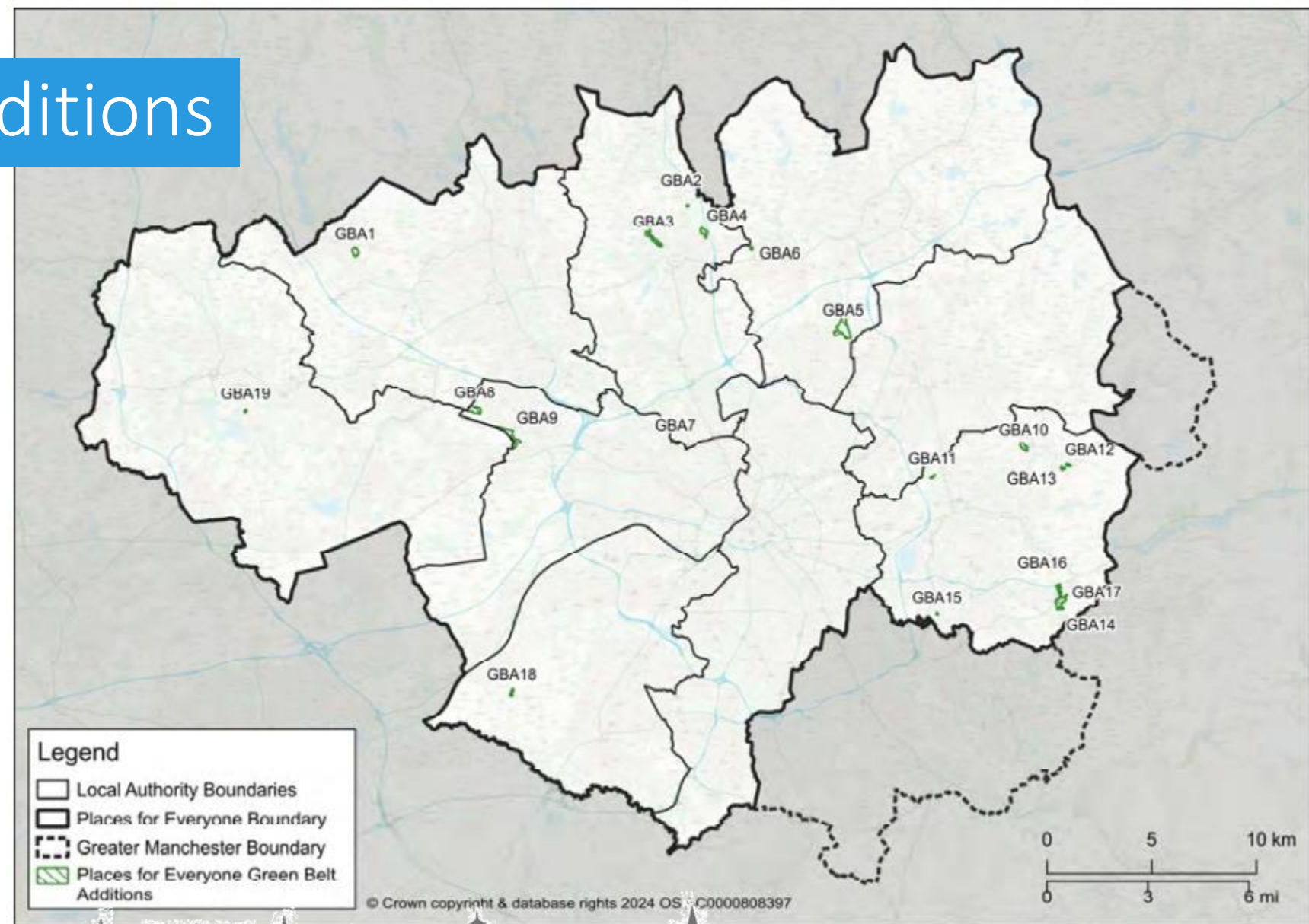


# Allocations and Additions





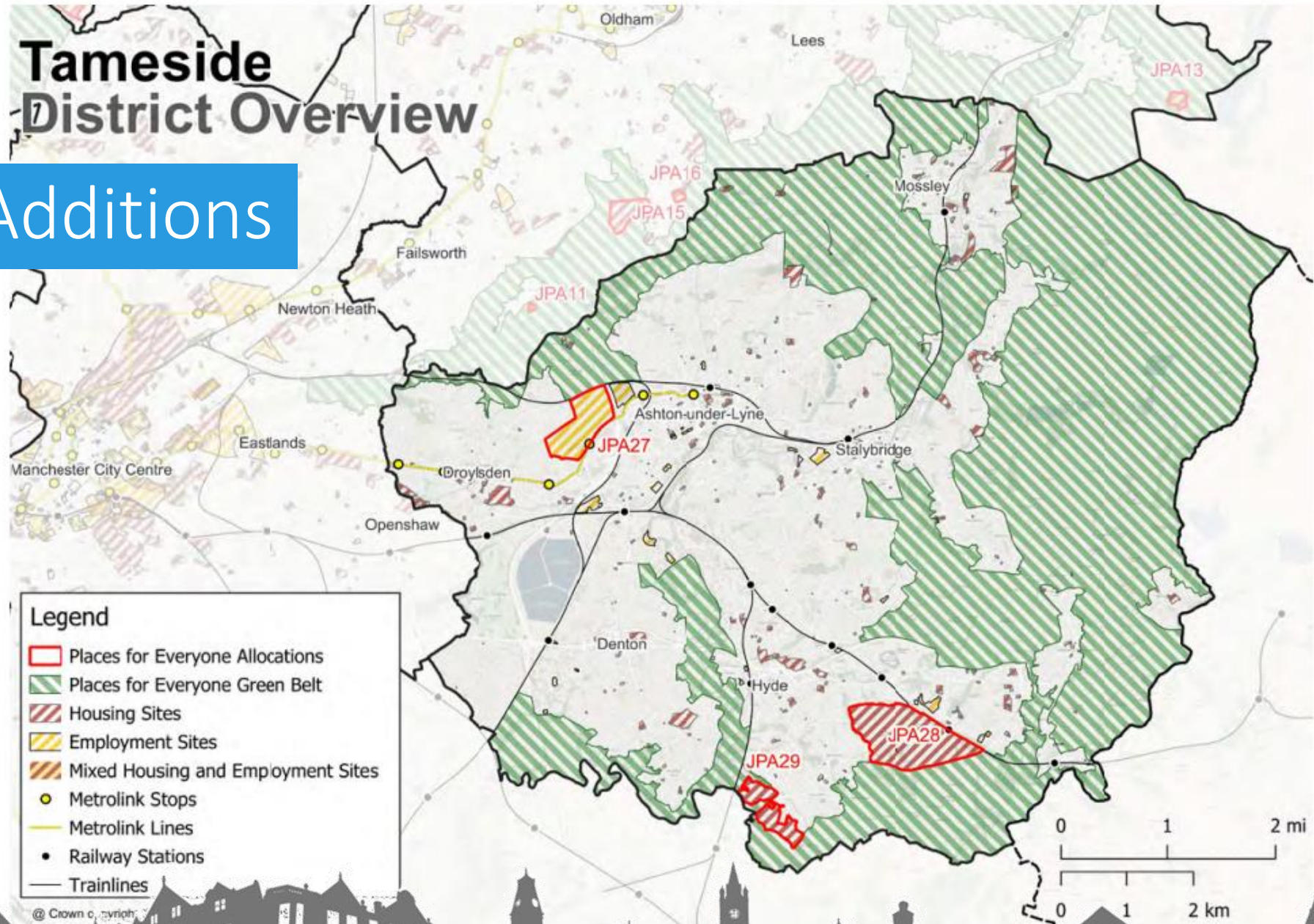
# Allocations and Additions





# Tameside District Overview

## Allocations and Additions

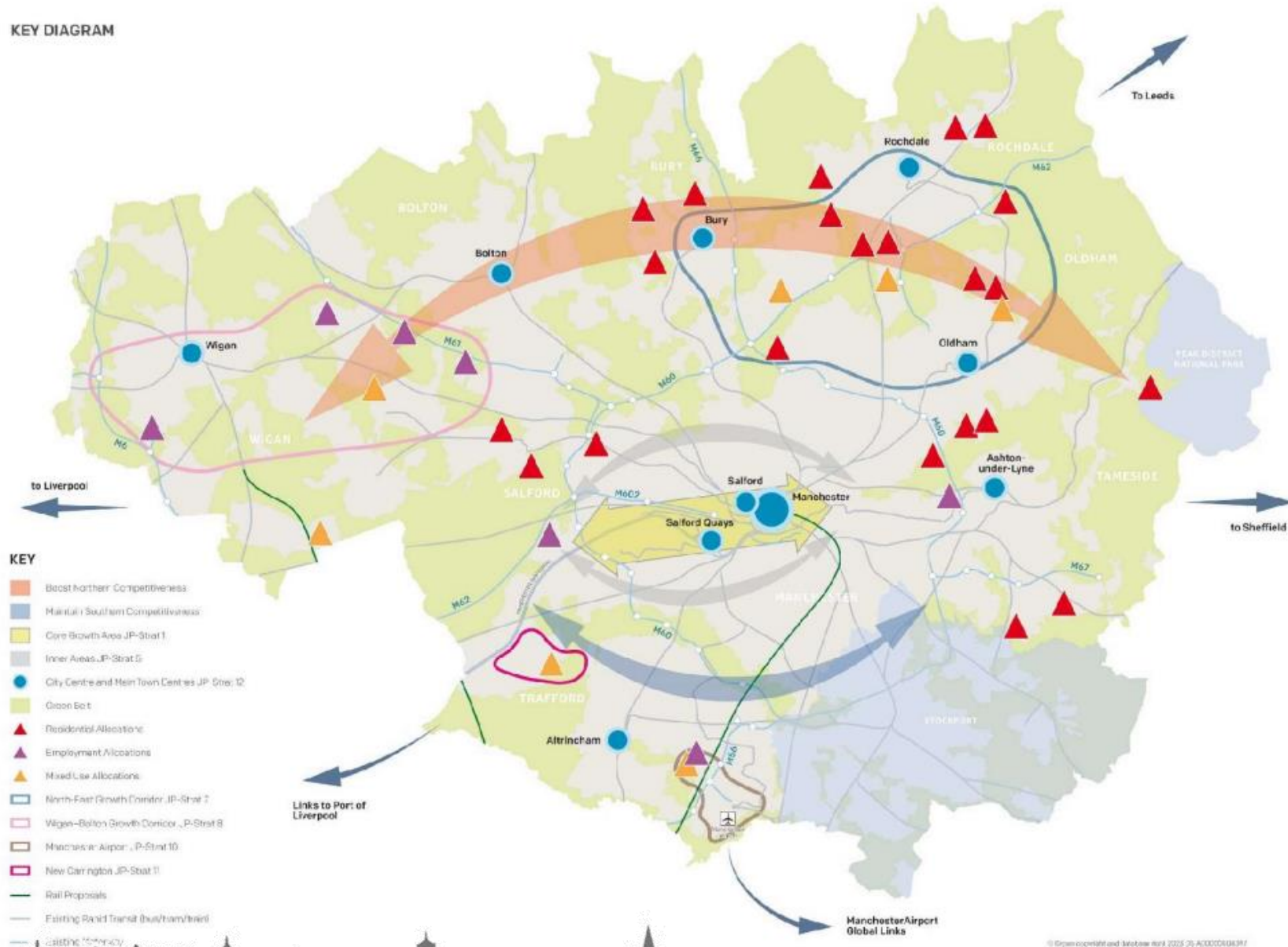




# Spatial Strategy

PfE Policy	Policy Name
JP-Strat 1	Core Growth Area
JP-Strat 2	City Centre
JP-Strat 3	The Quays
JP-Strat 4	Port Salford
JP-Strat 5	Inner Areas
JP-Strat 6	Northern Areas
JP-Strat 7	North-East Growth Corridor
JP-Strat 8	Wigan-Bolton Growth Corridor
JP-Strat 9	Southern Areas
JP-Strat 10	Manchester Airport
JP-Strat 11	New Carrington
JP-Strat 12	Main Town Centres
JP-Strat 13	Strategic Green Infrastructure
JP-Strat 14	A Sustainable and Integrated Transport Network

KEY DIAGRAM





# Sustainable & Resilient Places

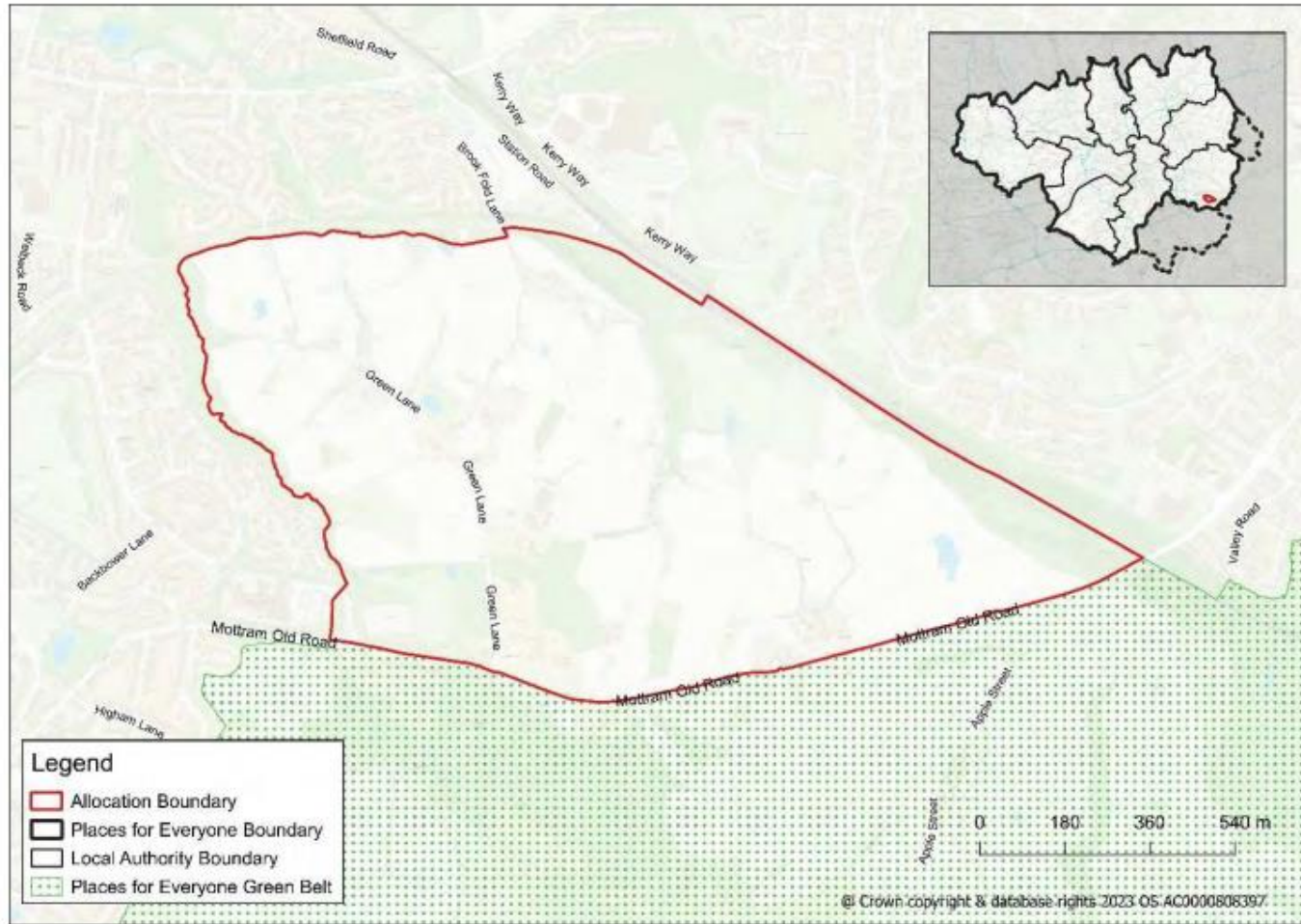
- GM ambition to be a carbon neutral city region by 2038
- **JP-S2 Carbon and Energy**
  - Part 8 is instructive for new development.
  - Commercial and residential
  - Energy statement
- **JP-S3 Heat and Energy Networks**
  - Part 2 is instructive for new (Major) development.
  - Opportunity areas identified. (Ashton/Mossley/strategic sites)
- **JP-S4 Flood Risk / JP-S5 Clean Air / JP-S6 Resource Efficiency**
  - Part replacement of UDP policies MW14 and U4



# Jobs – JPA27 – Ashton Moss West

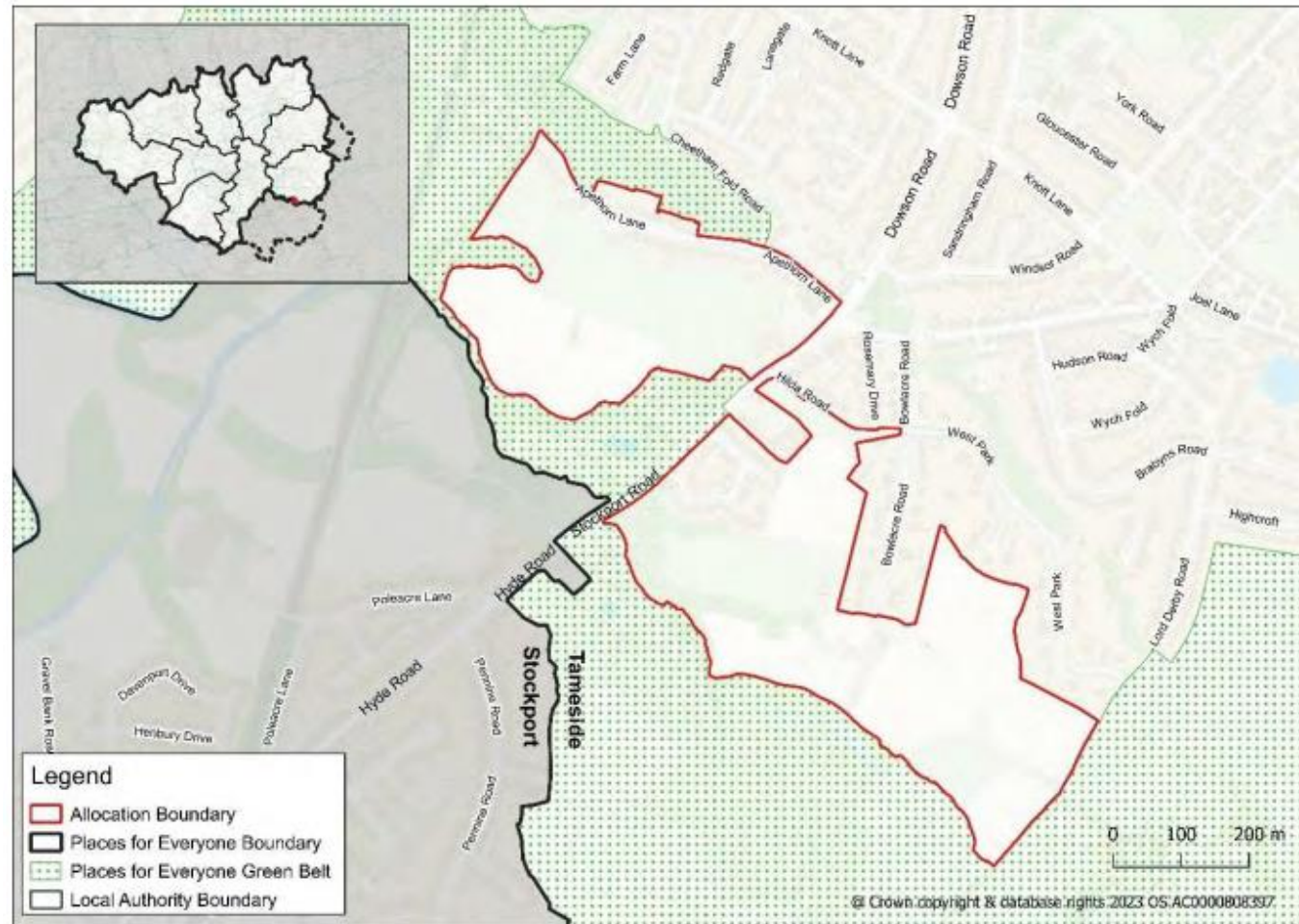


# Homes – JPA28 – Godley Green Garden Village





# Homes – JPA29 – South of Hyde



# Homes

- **JP-H2 Affordability**
  - Board ambition, detail is a local matter
- **JP-H3 Type/Size/Design**
  - Instructive that all homes to meet nationally described space standards
  - Instructive that all homes to meet the accessible and adaptable homes standard Part M4(2)
- **JP-H4 Density**
  - Replaces UDP policy H7 para (b)
  - Instructive of distance/minimum density approach
  - Pressure relief exceptions





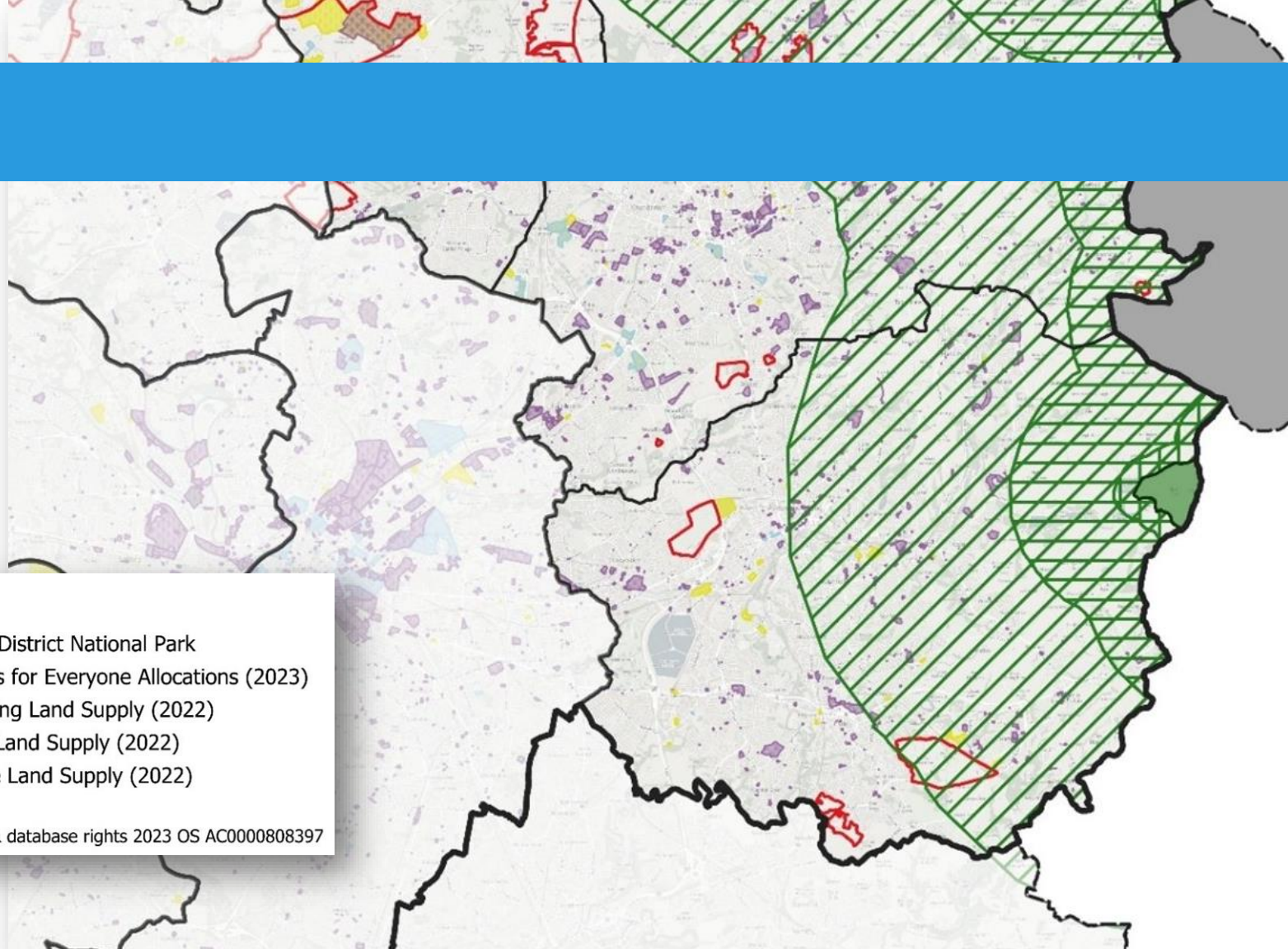
# Greener

## Legend

- Places for Everyone Boundary
- GM boundary
- Special Protected Areas/ Special Areas of Conservation
- SPA/SAC - 400m\*
- SPA/SAC - 2.5km\*
- SPA/SAC - 7km\*
- Peak District National Park
- Places for Everyone Allocations (2023)
- Housing Land Supply (2022)
- I&W Land Supply (2022)
- Office Land Supply (2022)

\* NOTE: Zones overlap

@ Crown copyright & database rights 2023 OS AC0000808397





# Greener

- **JP-G7 Trees and Woodland**

- Considerably increase street trees in urban areas
- Instructive requirement 2 for 1 basis when trees are lost through proposals

- **JP-G8 A net enhancement of bio/geo diversity**

- Instructive RE avoid/mitigate/compensate approach
- Don't fragment habitats
- Achieve a measurable net gain in biodiversity of no less than 10%

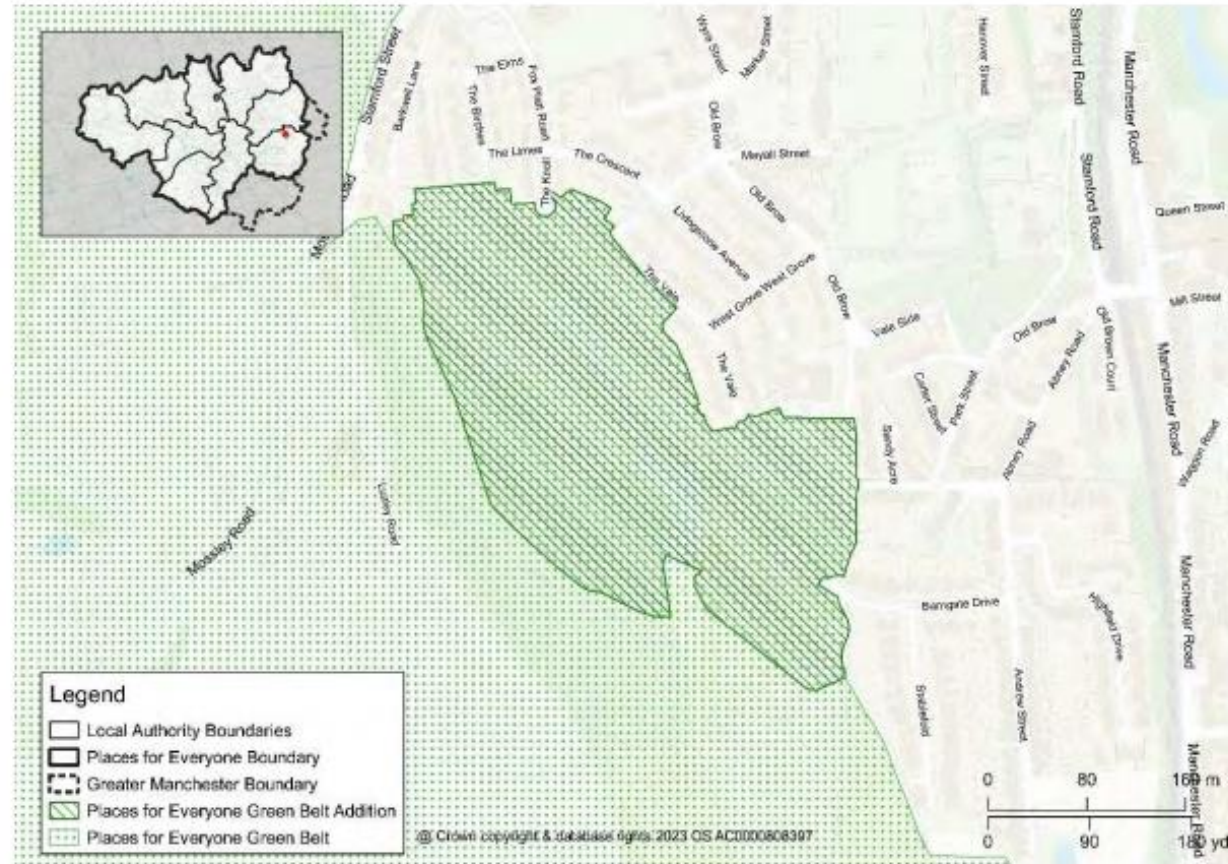
- **JP-G9 Green Belt**

- Replaces UDP policy OL1, OL2 and OL3
- First designated in 1984, also about additions, new boundary established



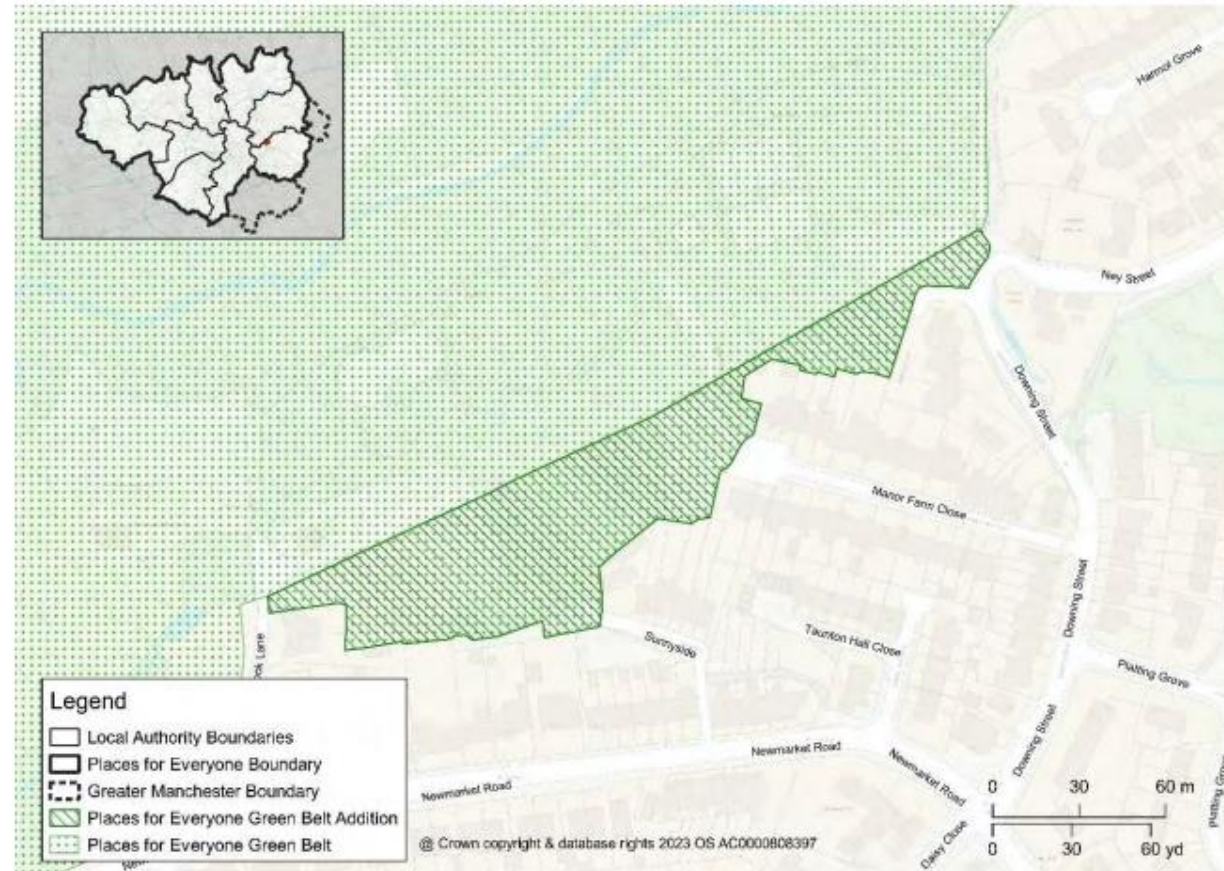
# GBA 10 – Fox Platt, Mossley

Picture B.11 GBA 10 Fox Platt Mossley



# GBA 11 – Manor Farm Close, Ashton-Under-Lyne

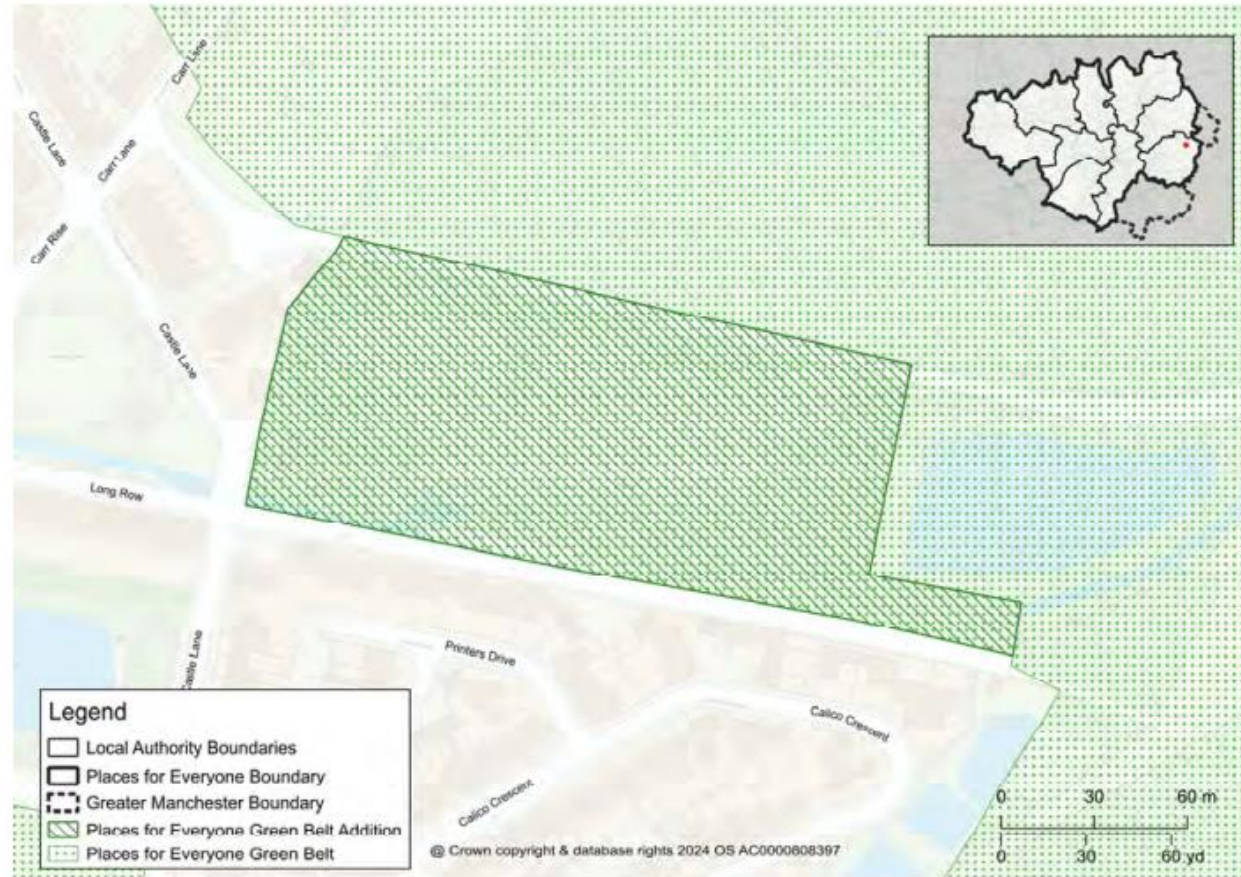
Picture B.12 GBA 11 Manor Farm Close, Waterloo, Ashton-Under-Lyne





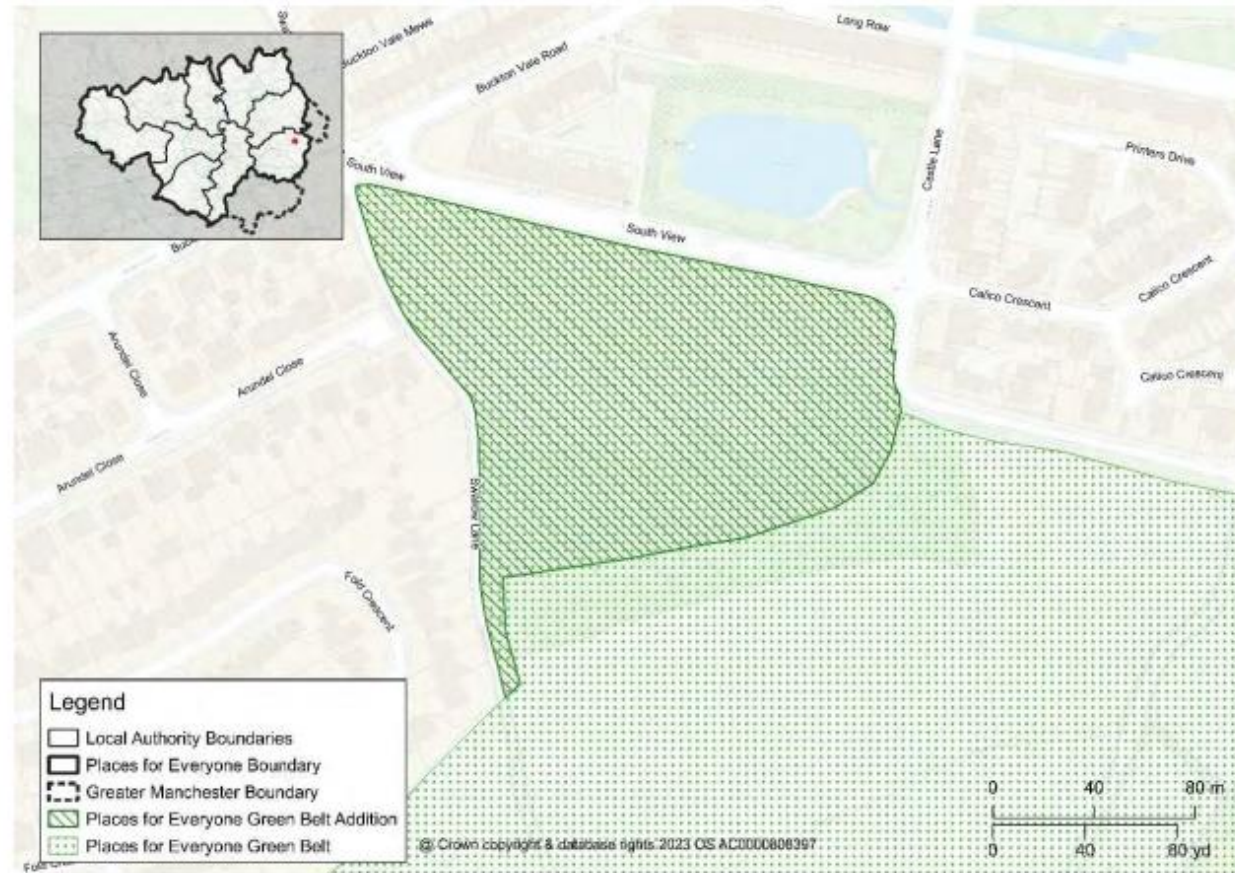
# GBA 12 – Cowbury Green, Stalybridge

Picture B.13 GBA 12 Cowbury Green, Long Row, Carrbrook, Stalybridge



# GBA 13 – Woodview, Stalybridge

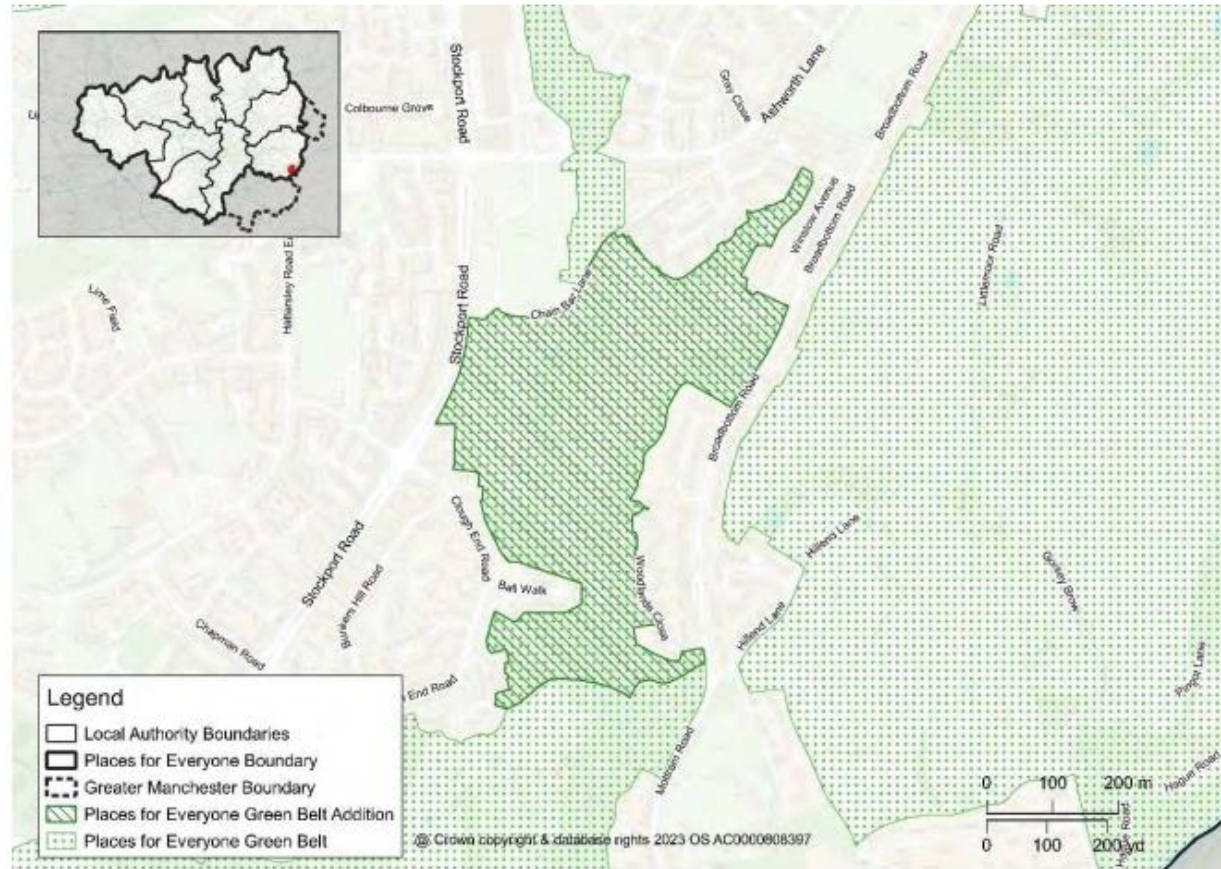
Picture B.14 GBA 13 Woodview, South View, Carrbrook, Stalybridge





# GBA 14 – Broadbottom Road, Broadbottom

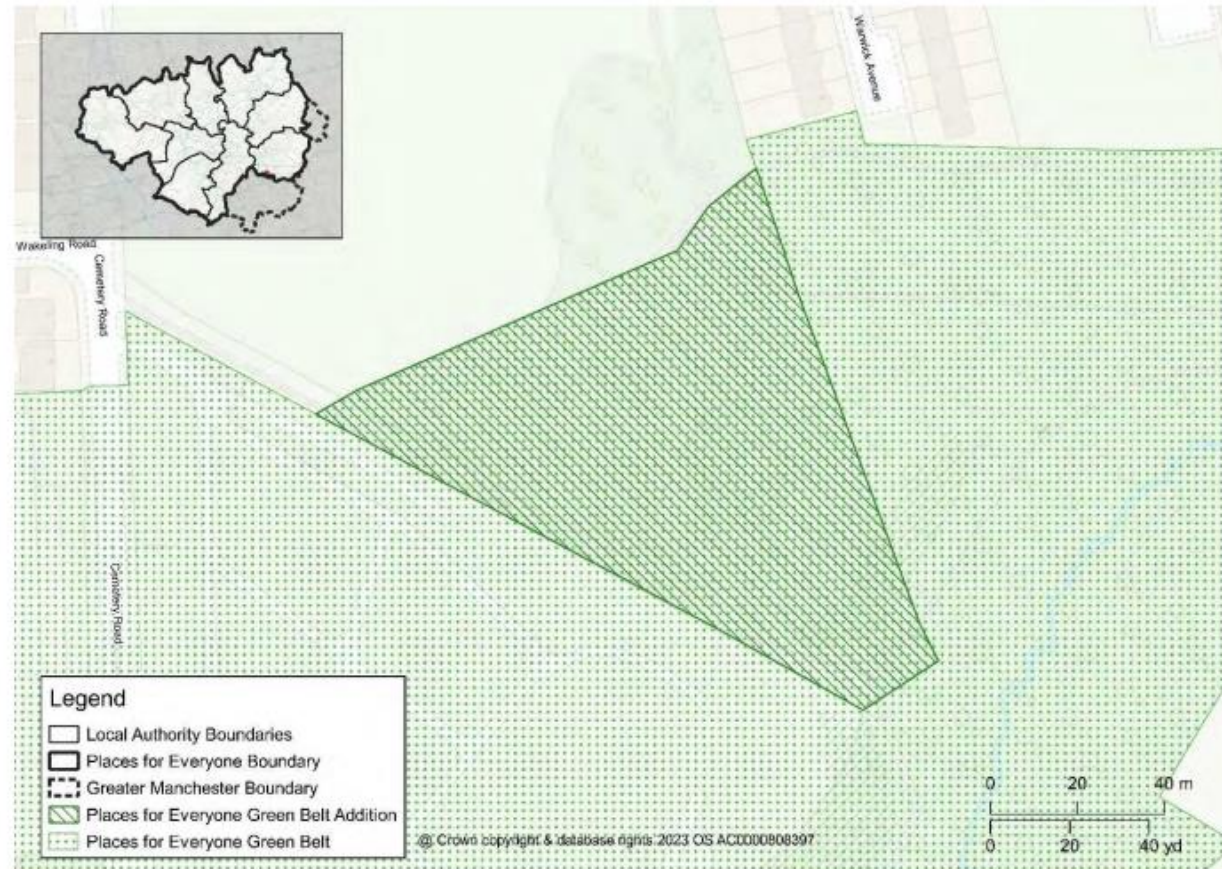
Picture B.15 GBA 14 Broadbottom Road, Broadbottom





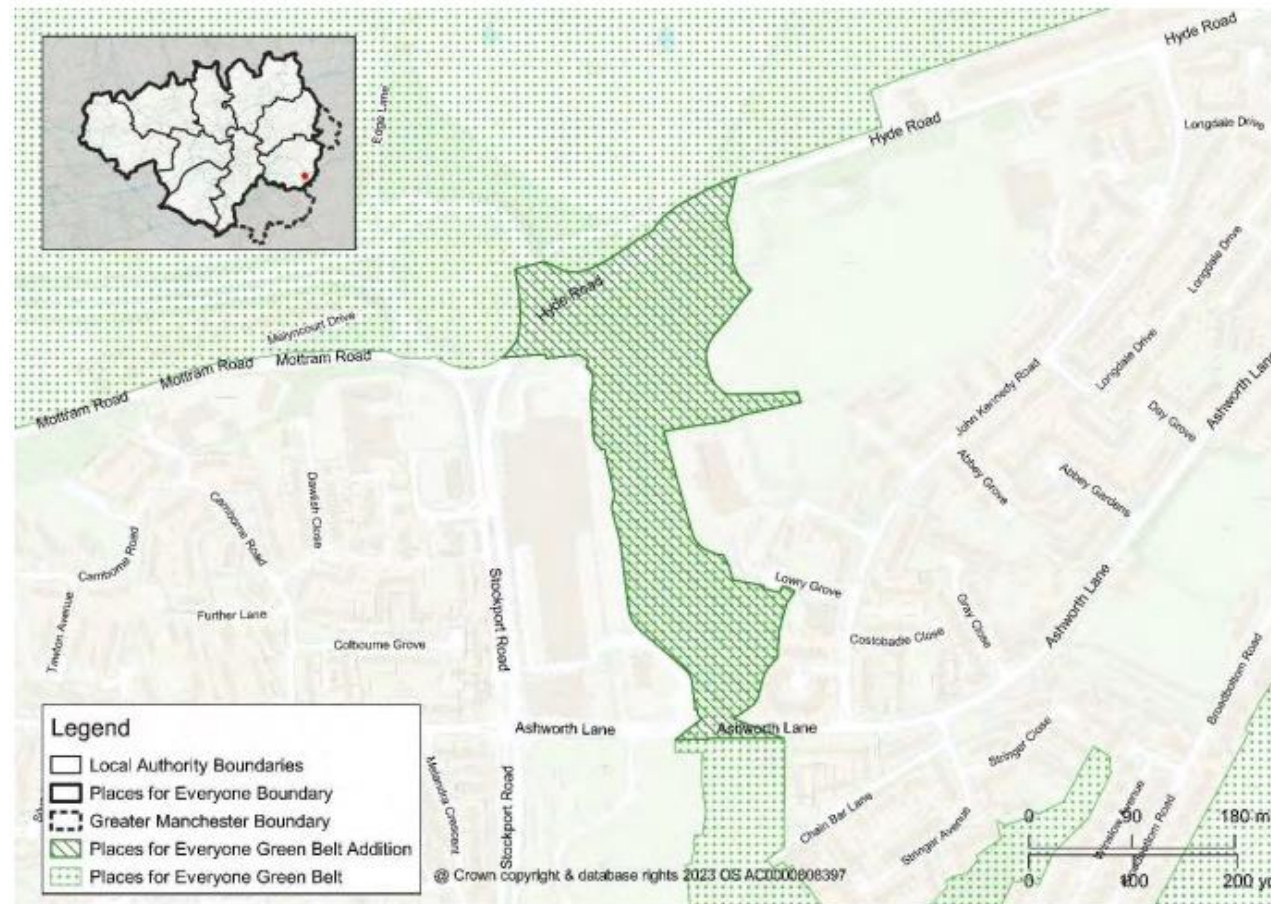
# GBA 15 – Cemetery Road, Denton

Picture B.16 GBA 15 Cemetery Road, Denton



# GBA 16 – Hyde Road, Mottram

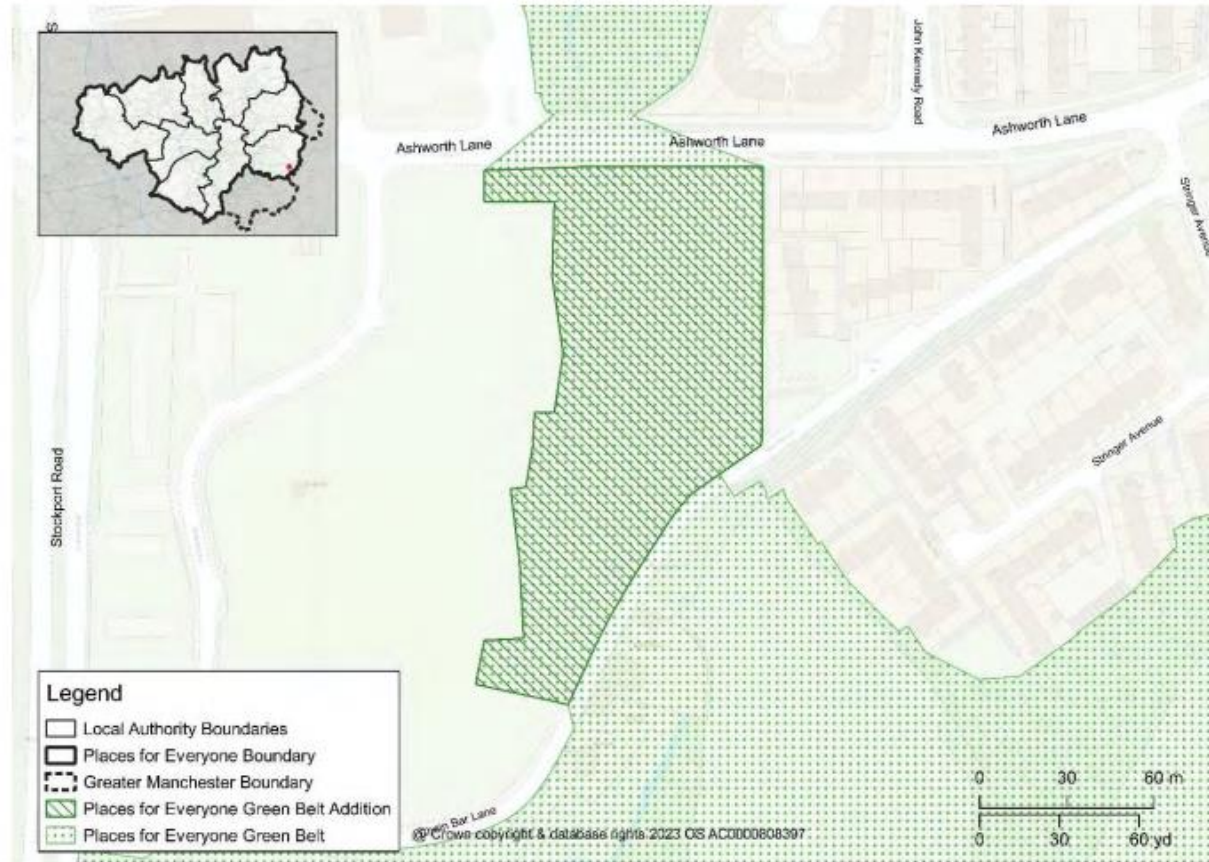
Picture B.17 GBA 16 Hyde Road, Mottram





# GBA 17 – Ashworth Lane, Mottram

Picture B.18 GBA 17 Ashworth Lane, Mottram





# Questions

